



In Robust Systems, Connections Count

Build connections to reduce risk in complexity

Live Virtual Workshop
October 2022

Royce Holladay, MEd
rholladay@hsdinstitute.org

Glenda Eoyang, PhD
geoyang@hsdinstitute.org

Nothing is intractable.



HSD Vision

People everywhere thrive because we see patterns clearly, seek to understand, and act with courage to transform turbulence and uncertainty into possibility for all.

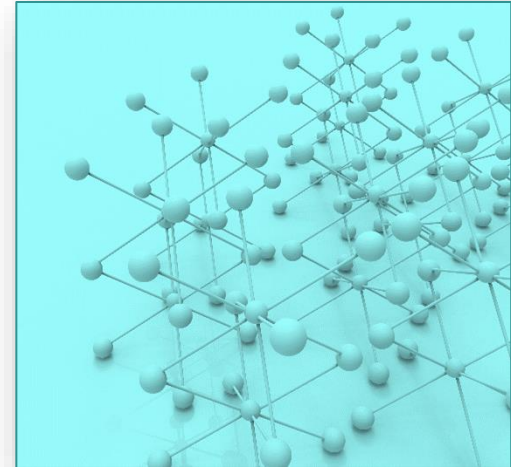
HSD Simple Rules

- ▶ Stand in inquiry
 - ▷ Turn judgment into curiosity
 - ▷ Turn conflict into shared exploration
 - ▷ Turn defensiveness into self-reflection
 - ▷ Turn assumptions into questions
- ▶ Find the energy in difference
- ▶ Zoom in and zoom out
- ▶ Connect through stories and impacts
- ▶ Search for the true and useful
- ▶ Celebrate life



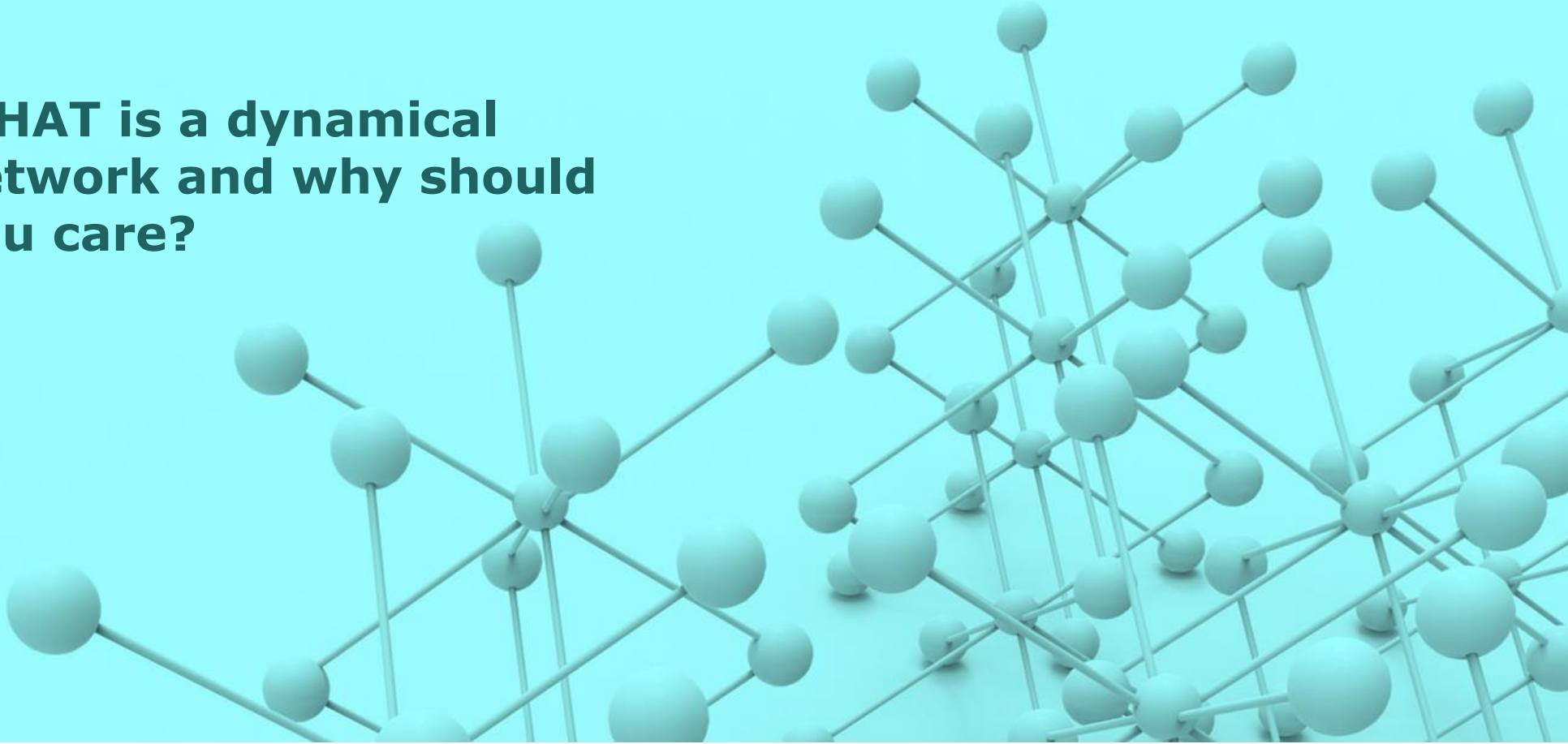
Today's Adaptive Action

- ▶ **WHAT?**
What is a dynamical network, and why should you care?
- ▶ **SO WHAT?**
So what design options influence robust networks?
- ▶ **NOW WHAT?**
Now what will build your Adaptive Capacity for networks that work?





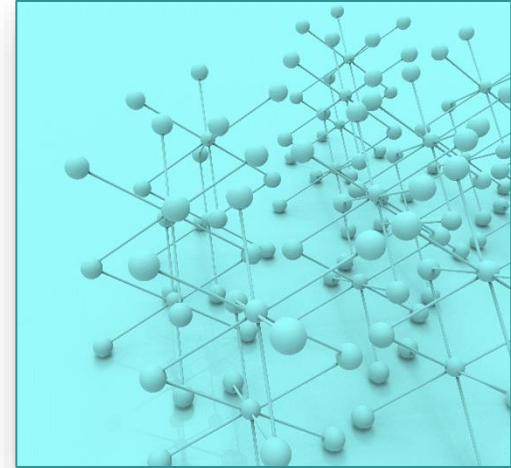
WHAT is a dynamical network and why should you care?





Network Basics

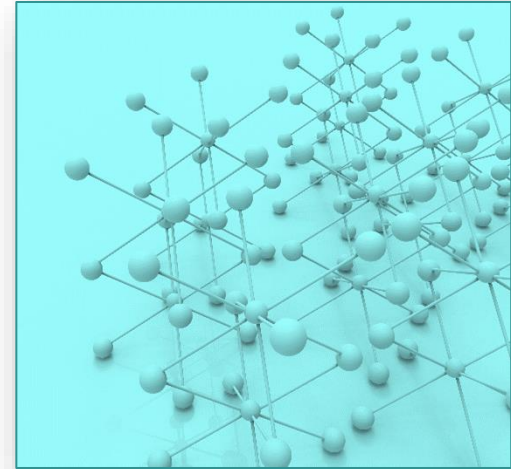
- ▶ Components
 - ▷ Nodes
 - ▷ Edges
 - ▷ Hubs
- ▶ Types
 - ▷ All to all
 - ▷ Hub and spoke
 - ▷ Scale free
 - ▷ Small world
- ▶ Measures of fitness:
 - ▷ Density
 - ▷ Centrality
 - ▷ Homogeneity
 - ▷ Stability (nK)





Networks in Complexity

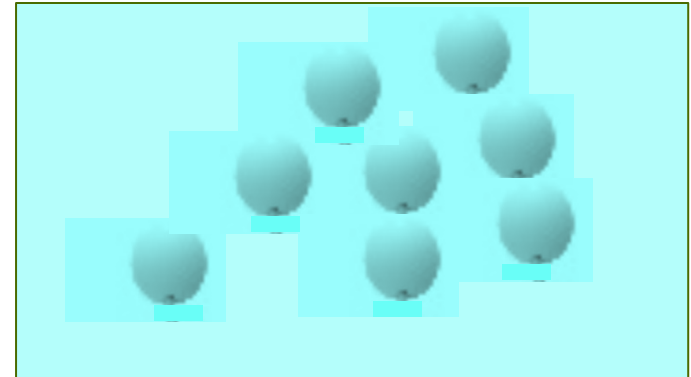
- ▶ **Examples:**
 - ▷ Collaborative healthcare
 - ▷ Neighborhood watch groups
 - ▷ Supply chains
 - ▷ Internet
 - ▷ Alumni communities
 - ▷ Social media
- ▶ **Benefits:**
 - ▷ Information and resource access
 - ▷ Interdependence
 - ▷ Wholes and parts in relationship
- ▶ **Risks:**
 - ▷ High cost to build and maintain
 - ▷ Rigidity
 - ▷ Conflict within and between
 - ▷ Rich get richer and self-reinforcing





Dynamical Networks Are Adaptive

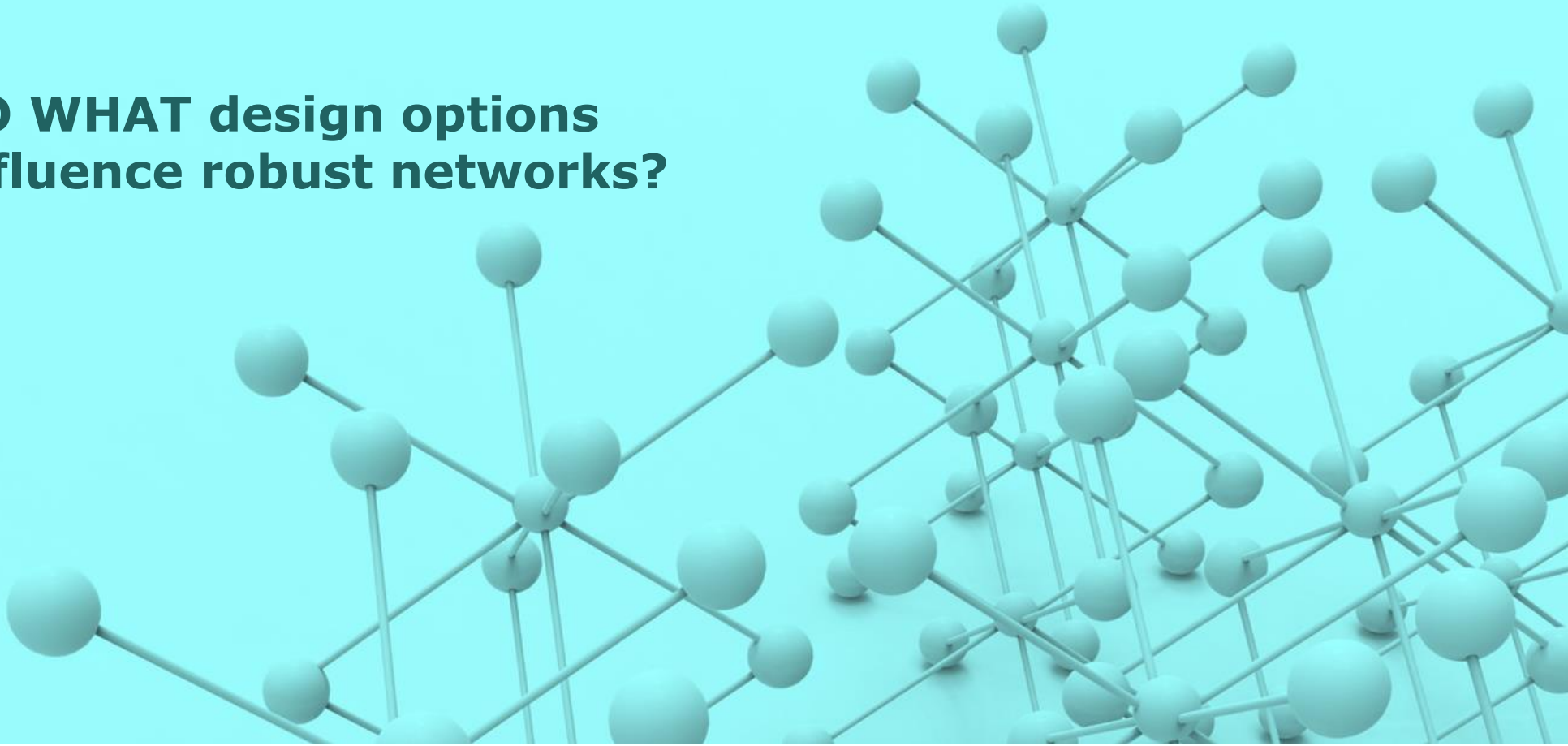
- ▶ Focus on Difference and Exchange, not Container
- ▶ Nodes are diverse and semi-autonomous
- ▶ Differences that make a difference and Exchanges are contextual
- ▶ Connections form and re-form quickly
- ▶ Structures adapt to be fit for function
- ▶ Structures overlay and intersect
- ▶ Relationships emerge and dissolve



Adaptive Capacity allows Ds and Es to shift as conditions change



SO WHAT design options influence robust networks?





Designing Exchanges



Length:

How long does it take?

Long is ambiguous and freeing

Short is clear and controlling

Designing Exchanges



Length:

How long does it take?

Long is ambiguous and freeing

Short is clear and controlling

Width:

How much does it carry?

Wide is interesting and can confuse

Narrow is crisp and incomplete

Designing
Exchanges



Length:

How long does it take?

Long is ambiguous and freeing
Short is clear and controlling

Width:

How much does it carry?

Wide is interesting and can confuse
Narrow is crisp and incomplete

Designing Exchanges

Dynamic:

Does it amplify or damp?

Amplifying increases energy
Damping reduces energy



Length:

How long does it take?

Long is ambiguous and freeing
Short is clear and controlling

Width:

How much does it carry?

Wide is interesting and can confuse
Narrow is crisp and incomplete

Designing Exchanges

Dynamic:

Does it amplify or damp?

Amplifying increases energy
Damping reduces energy

Direction:

Does it feed back?

One-way is controlling or NOT
Two-way encourages adaptation

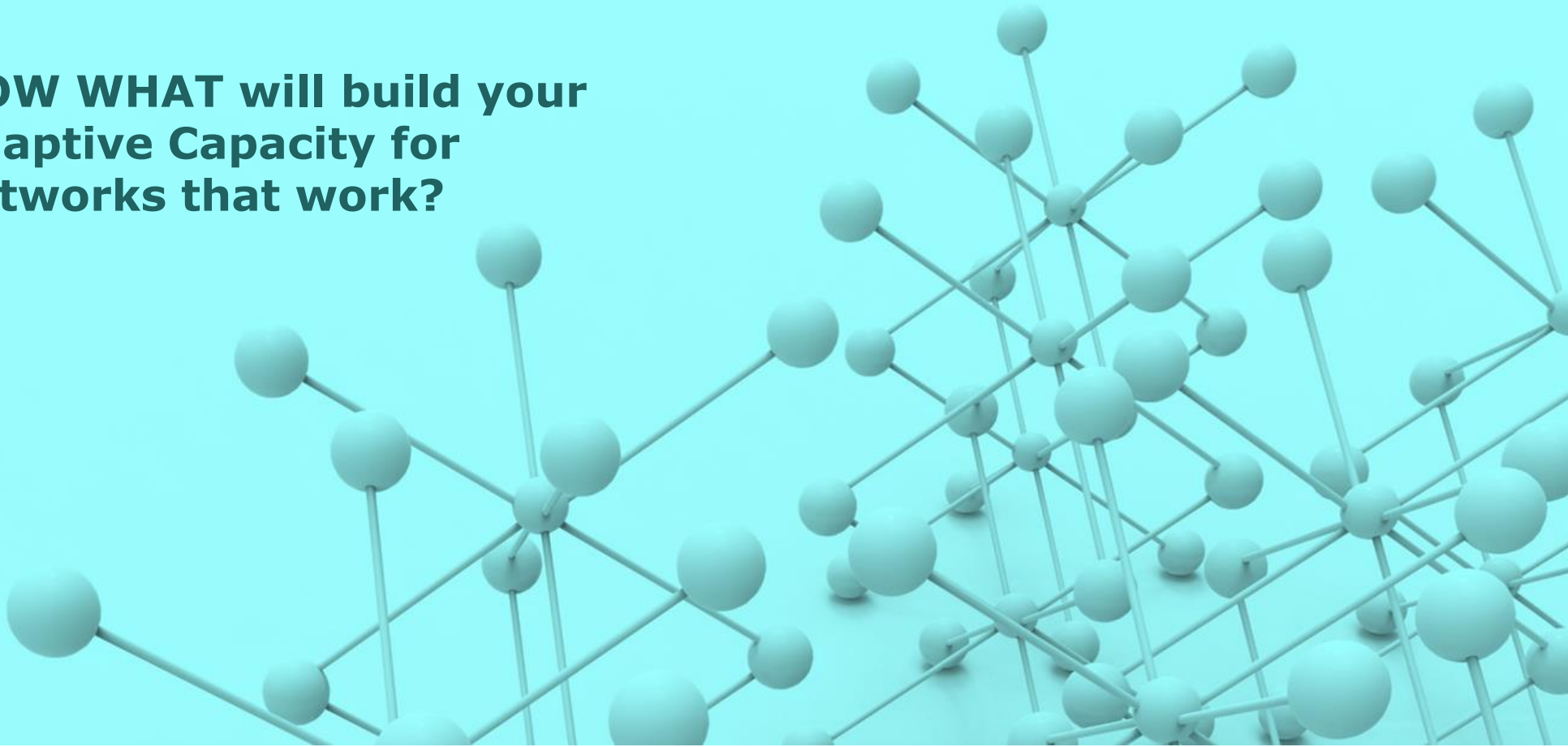


For example . . . Kinds of Collaboration

	Mutual Support	Shared Projects	Joint Ventures	Strategic Partners
Visions	Different	Project outcomes	Venture outcomes	Shared future
Goals	Different	Project-level	Initiative-level	Missions
Dependencies	Few, simple	Many, short-term	Many, long-term	Co-evolution
Measures	Different	Based on project goals	Based on purpose	Performance
Connections	Infrequent	Frequent Short duration	Frequent Few points	Frequent Many points
Requests	Specific One time	Negotiated Project Charter	Negotiated Memo of Understand.	Negotiated Contracted
Activities	Communication Request & support Intermittent	Plan Projects Tasks & monitoring Short-term	Plan Initiatives Tactics & decisions Medium-term	Plan & strategize Identity Long-term
Examples	Shared facilities	Vaccination Drive	Public/Private P'ships	Sexual assault kits



NOW WHAT will build your Adaptive Capacity for networks that work?





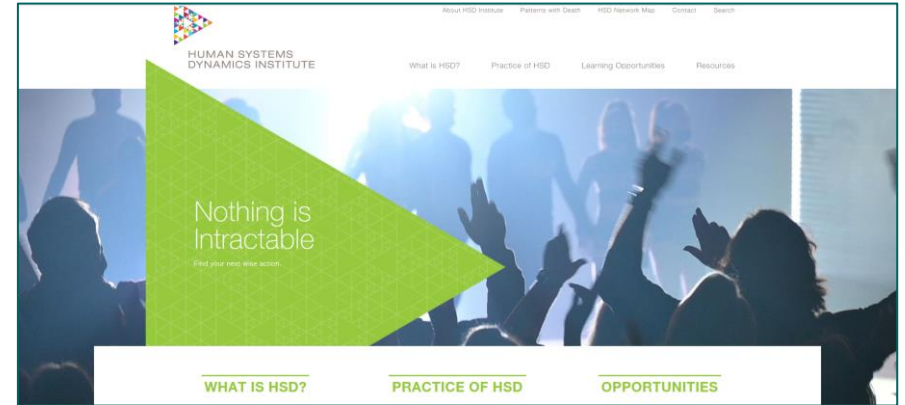
Exchanges			
	WHAT?	SO WHAT?	NOW WHAT?
Length			
Width			
Dynamic			
Direction			



Want to learn more?

- ▶ Daily Power of Questions
- ▶ Free, monthly webinars
- ▶ Blog posts and event announcements
- ▶ Adaptive Action Labs (2, 3-hour sessions on relevant topics)
- ▶ HSDP Certification (on-line and face-to-face)
- ▶ Website with many resources
- ▶ Books and more!

www.hsdinstitute.org





Thanks!